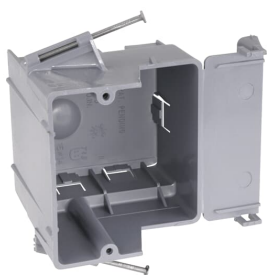


PRODUCT-DETAILS

RD30-6R

1-G NAIL-ON NW OUTL-BX 30CU BLU PVC



General Information

Extended Product Type	RD30-6R
Product ID	7TAA040030R0010
EAN	0034481014058
Catalog Description	1-G NAIL-ON NW OUTL-BX 30CU BLU PVC
Long Description	One-Gang Nail-On New Work Box, Volume 30 Cubic Inches, Length 3-11/16 Inches, Width (Opening) 2-5/16 Inches (Overall) 3-7/8 Inches, Depth 3-5/8 Inches, Color Blue, Material PVC, Mounting Means Recessed Angled Nails, with Large Knockouts for #6 or #8 Cable

Ordering

EAN	0034481014058
-----	---------------

Dimensions

Product Net Weight	.34 lb 154.195 g
--------------------	---------------------

Container Information

Package Level 2 Units	6 piece
Package Level 2 Width	6.3 in 160 mm

Package Level 2 Height	7.3 in 185 mm
Package Level 2 Depth / Length	15 in 381 mm

Additional Information

Application	Designed and listed for use with non-metallic sheathed cable in accordance with Article 314 of the National Electrical Code
Brand / Label	Carlton
Color	Blue
Material	PVC
Mounting Type	Recessed Angled Nails
Number of Batteries	0
Number of Knockouts	4
Product Name	ELECTRICAL PLASTIC BOX
Product Type	One-Gang Nail-On New Work Box
Special Functions	Large knockout for #6 or #8 cable
UPC	034481014058
Volume	30 in ³

Certificates and Declarations (Document Number)

Data Sheet, Technical Information	RD30-6R
Instructions and Manuals	RD30-6R

Classifications

ETIM 6	EC002601 - Box/housing for built-in mounting in the wall/ceiling
ETIM 7	EC002601 - Box/housing for built-in mounting in the wall/ceiling
UNSPSC	39121308
WEEE Category	Product Not in WEEE Scope
IDEA Granular Category Code (IGCC)	4433 >> Outlet box

Categories

Low Voltage Products and Systems → Installation Products → Wire Management and Connectivity → Electrical Boxes

