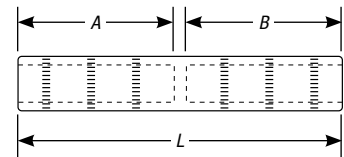


## Aluminum Splices

Reducers for general URD applications.

### Aluminum Straight Reducing Splices — Common Die Series

- Install with six common dies to reduce your die inventory
- Dual-rated for use with aluminum and copper conductors
- Bores coated with oxide inhibitor to prevent oxidation
- Marked with conductor sizes and die references for easy identification
- Meets or exceeds ANSI C119.4 specifications



CAT. NO.	SIDE A			SIDE B			A-B	L	INSTALLING DIES
	CONCENTRIC/ COMPRESSED	COMPACT	SOLID	CONCENTRIC/ COMPRESSED	COMPACT	SOLID			
SAC 4 R 6	#4	#4	—	#6	#6	—	1 <sup>1</sup> / <sub>16</sub>	3	CSA 22, 3/8, BG, 243
SAC 2 R 4	#2	#1, #2	#1	#4	#4	—			
SAC 1 R 2	#1	1/0	1/0	#2	#1, #2	#1			
SAC 1/0 R 4	1/0	2/0	2/0	#4	#4	—			
SAC 1/0 R 2	1/0	2/0	2/0	#2	#1, #2	#1			
SAC 1/0 R 1	1/0	2/0	2/0	#1	1/0	1/0			
SAC 2/0 R 2	2/0	3/0	3/0	#2	#1, #2	#1	1 <sup>1</sup> / <sub>8</sub>	4	840, 249, TX, CSA 24
SAC 2/0 R 1/0	2/0	3/0	3/0	1/0	2/0	2/0			
SAC 3/0 R 1/0	3/0	4/0	—	1/0	2/0	2/0			
SAC 3/0 R 2/0	3/0	4/0	—	2/0	3/0	3/0			
SAC 4/0 R 2	4/0	250	—	#2	#1, #2	#1			
SAC 4/0 R 1/0	4/0	250	—	1/0	2/0	2/0			
SAC 4/0 R 2/0	4/0	250	—	2/0	3/0	3/0	2 <sup>3</sup> / <sub>8</sub>	5	96, 299, 655, 1 <sup>1</sup> / <sub>8</sub> -1, 13A
SAC 250 R 3/0	250	—	—	3/0	4/0	—			
SAC 250 R 4/0	250	—	—	4/0	250	—			
SAC 300 R 250	300	—	—	4/0-250	—	—			
SAC 350 R 2	350	—	—	#2	#1, #2	#1			
SAC 350 R 1/0	350	—	—	1/0	2/0	2/0			
SAC 500 R 2	500	—	—	#2	—	—	2 <sup>2</sup> / <sub>32</sub>	5 <sup>1</sup> / <sub>16</sub>	1 <sup>1</sup> / <sub>16</sub> , 5A, 300, 106, 317
SAC 500 R 1/0	500	—	—	1/0	—	—			
SAC 500 R 2/0	500	—	—	2/0	—	—			
SAC 500 R 3/0	500	—	—	3/0	—	—			
SAC 500 R 4/0	500	—	—	4/0	250	—			
SAC 500 R 300	500	—	—	300	—	—			
SAC 750 R 1/0	750	—	—	1/0	—	—	3	6 <sup>1</sup> / <sub>4</sub>	140H, 301, 342
SAC 750 R 4/0	750	—	—	4/0	250	—			
SAC 750 R 250	750	—	—	250	—	—			
SAC 750 R 350	750	—	—	350	—	—			
SAC 750 R 500	750	—	—	500	—	—			
SAC 1000 R 400	1000	—	—	400	—	—			
SAC 1000 R 500	1000	—	—	500	—	—	3 <sup>3</sup> / <sub>8</sub>	7	161, 302, 292, 319, 1 <sup>3</sup> / <sub>4</sub>
SAC 1000 R 750	1000	—	—	750	—	—			

Note: For tin-plating option, add "-TN" suffix to the catalog number.