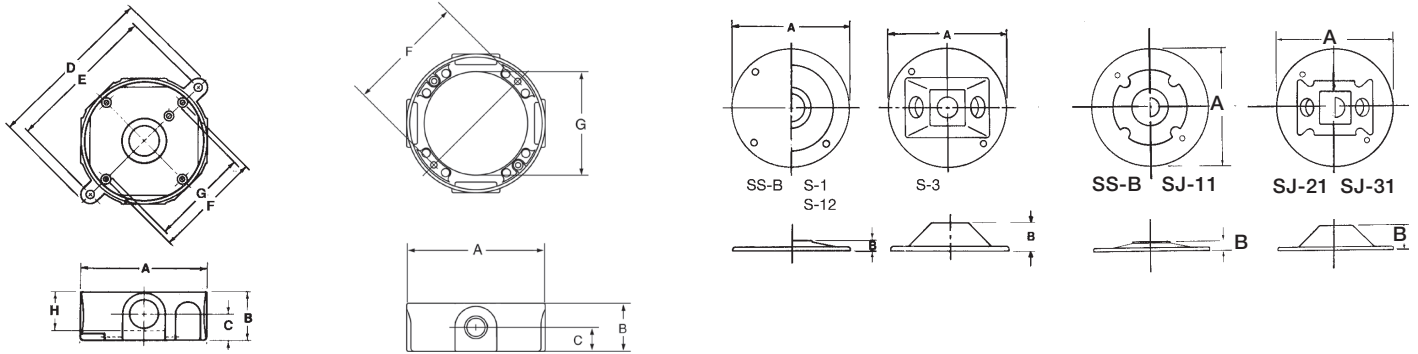


Weatherproof metallic boxes

Round boxes, extensions and covers

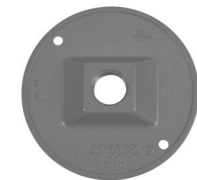
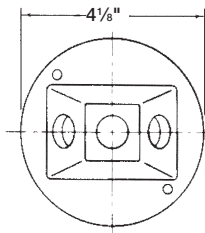
Outlet boxes, extensions



Cat. No.	Dimensions (in.)									
	Hub Size	A	B	C	D	E	F	G	H	CI
S-47	1/2	4 1/8	1 5/8	3/4	5 9/16	4 15/16	3 1/2	3 3/8	1 1/4	17.0
S130E	1/2	4 1/8	1 5/8	1 1/16	—	—	3 1/2	3 1/16	—	18.3
S-71	1/2	4 1/8	1 5/8	3/4	5 9/16	4 15/16	3 1/2	3 3/8	1 1/4	16.3
S-48	3/4	4 1/8	1 5/8	7/8	5 9/16	4 15/16	3 1/2	3 3/8	1 1/4	17.0
SE-48	3/4	4 1/8	1 5/8	1 3/16	—	—	3 1/2	3 1/16	—	18.3
SS-B	—	4 1/8	3/64	—	—	—	—	—	—	—
S-1	1/2	4 1/8	1 3/8	—	—	—	—	—	—	—
S-12	3/4	4 1/8	3/8	—	—	—	—	—	—	—
S-3	1/2	4 1/8	1 1/16	—	—	—	—	—	—	—
SS-B	—	4 1/2	3/8	—	—	—	—	—	—	—
SJ-11	1/2	4 1/2	3/8	—	—	—	—	—	—	—
SJ-21	1/2	4 1/2	1	—	—	—	—	—	—	—
SJ-31	1/2	4 1/2	1	—	—	—	—	—	—	—

Round lampholder covers

- Heavy-duty die-cast construction
- Powder-coat finish in silver, bronze or white
- Three-hole cover is supplied with a 1/2" closure plug
- Supplied with sealing gasket and cover screw



S211E

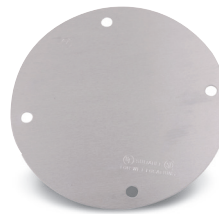
Cat. No.	No. of Outlet Holes	Outlet Size	Color	Std. Ctn.
S211E	1	1/2	Silver	25
S211BRE	1	1/2	Bronze	25
S211WHE	1	1/2	White	25
S201E	2	3/4	Silver	25
S213E-15R	3	1/2	Silver	25
S213BRE-9R	3	1/2	Bronze	25
S213WHE-9R	3	1/2	White	25

UL Listed E-51763.
CSA Certified LR-18685.

Round blank covers

SS-B

CCRSB



Cat. No.	Color	Description
4 1/8" Diameter		
SS-B	Silver	Weatherproof cover with gasket and screws
5" Diameter		
CCRSB	White	Mounting holes 2 3/4" on center (not raintight)
CCRB	White	Mounting holes 3 1/2" on center (not raintight)

Note: Covers are raintight when used with appropriate Red•Dot® boxes. All covers packed with gasket and screws.

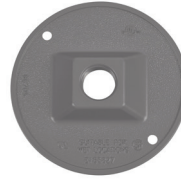
Weatherproof metallic lampholders

Lampholder covers

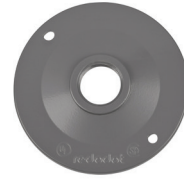
Round lampholder covers

Standard covers

Cat. No.	Color	Hub size (in.)	Description
Gaskets and screws, 4 1/2" diameter			
S211E	Silver	1/2	One tapped hole
S-12	Silver	3/4	One tapped hole
S213E-15R	Silver	1/2	Three tapped holes
D-PAK®			
S211E	Silver	1/2	One tapped hole
S211BRE	Bronze	1/2	One tapped hole
S211WHE	White	1/2	One tapped hole
S213E-15R	Silver	1/2	Three tapped holes
S213BRE-9R	Bronze	1/2	Three tapped holes
S213WHE-9R	White	1/2	Three tapped holes
S621E	—	—	Universal gasket



S211E



S-12



S213E-15R

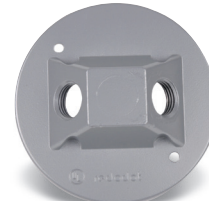
Jumbo covers

Cat. No.	Color	Hub size (in.)	Description
Gaskets and screws, 4 1/2" diameter			
SJ-11	Silver	1/2	One tapped hole
SJ-21	Silver	1/2	Two tapped holes
SJ-31	Silver	1/2	Three tapped holes

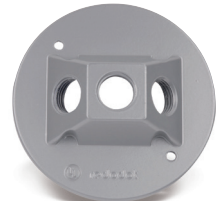
Note: Covers are raintight when used with appropriate Red•Dot® boxes. All covers packed with gasket and screws.



SJ-11



SJ-21



SJ-31

Single-gang lampholder covers

Cat. No.	Color	Size (in.)	Description
Standard (2 3/16" x 4 1/2")			
Jumbo (3 1/8" x 4 1/2")			
S201E	—	1/2	One-hole device mount
LC-21	—	1/2	Two-hole device mount
S203E-R	—	1/2	Three-hole device mount
D-PAK®			
S203E-R	Silver	1/2	Three-hole device mount
S203BRE	Bronze	1/2	Three-hole device mount
S203WHE	White	1/2	Three-hole device mount



S201E



LC-21



S203E-R