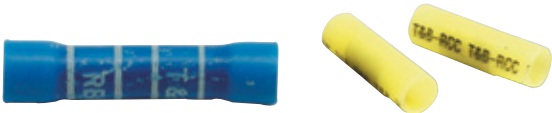


Splice connectors

Vinyl-insulated butt splices & nylon-insulated aircraft splices

Butt splices

- Wires are butted together and crimped at each end of the splice
- Available either non-insulated or insulated with nylon or PVC
- Nylon-insulated splices meet or exceed the requirements of MIL-T-7928
- Color-coded according to wire size



Parallel splices

- Wires are laid side by side in the connector, and the connection is made in one crimp
- Offer advantages in simplicity of installation and small size
- One crimp completes the splice

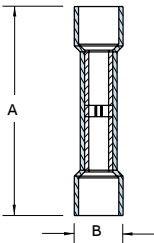


Vinyl-insulated butt splices – Expanded insulation



Cat. no.	Pkg. qty.	Wire range (AWG)	Max. ins. (in.)	Rec. tool	Dimensions (in.)	
					A	B
2RA18X	100	22–18	0.170	ERG4001	1.13	0.25
RAA217-170	1,000	22–18	0.170		1.13	0.25
RAA217	1,000	22–18	0.150		1.13	0.23
2RB14X	100	16–14	0.200		1.13	0.26
RBB217-200	1,000	16–14	0.200		1.13	0.26
RBB217	1,000	16–14	0.170		1.13	0.24
2RC10X	50	12–10	0.250		1.31	0.31
RCC217-250	500	12–10	0.250		1.31	0.31
RCC217	1,000	12–10	0.210		1.31	0.28

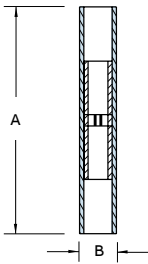
Diagram



Nylon-insulated aircraft splices

Cat. no.	Pkg. qty.	Wire range (AWG)	Rec. tool	Dimensions (in.)	
				A	B
2RZZ	50	26–22	ERG4006	1.22	0.15
RZZ23	500	26–22			
2RAA	50	22–18	ERG4001	1.52	0.25
RAA23	500	22–18			
2RBB	50	16–14		1.52	0.28
RBB23	500	16–14			
2RCC	25	12–10		1.54	0.35
RCC23	250	12–10			

Diagram



Note: RCC217 is not expanded.

Wire joints

Crimp-on wire joints, one-piece nylon self-insulated

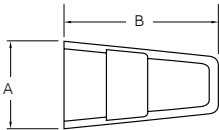


Crimp-on wire joints, one-piece nylon self-insulated



Cat. no.	pkg. qty.	Wire range (AWG)		Rec. tool	Dimensions (in.)	
		min.	max.		A	B
RB44	100	2#18	2#16	WT2000	0.31	0.78
RB4-TB	1,000	2#18	2#16		0.31	0.78
RC55	50	4#18	2#12	WT2130A	0.43	0.95
RC6	500	4#18	2#12		0.43	3
RP12	100	3#14	4#12		0.53	1.00
RP7	1,000	3#14	4#12		0.53	1.00

Diagram



Cat. no.	Allowable wire combinations (AWG)						
	#22	#20	#18	#16	#14	#12	#10
RB4-TB/ RB44	-	-	2-3	-	-	-	-
	-	-	1-2	2	-	-	-
	3	-	-	-	-	-	-
	-	3	-	-	-	-	-
	3	-	1	-	-	-	-
	2	3	-	-	-	-	-
	1-2	-	2	-	-	-	-
	2	-	-	1	-	-	-
	-	3	1	-	-	-	-
	1	2	-	-	-	-	-
	-	2	-	1	-	-	-
	-	1	2	-	-	-	-

Cat. no.	Allowable wire combinations (AWG)						
	#22	#20	#18	#16	#14	#12	#10
RC6/ RC55	-	-	1-4	-	-	1	-
	-	-	-	1-3	-	1	-
	-	-	-	-	1-2	1	-
	-	-	-	-	-	2	-
	-	-	3-5	-	1	-	-
	-	-	-	2-4	1	-	-
	-	-	-	-	3	-	-
	-	-	1-4	-	2	-	-
	-	-	-	1-3	2	-	-
	-	-	1-3	-	3	-	-
	-	-	-	1	3	-	-
	-	-	-	2-5	-	-	-
	-	-	4-6	-	-	-	-
	-	-	-	-	-	-	-
	-	-	-	-	-	-	-

Cat. no.	Allowable wire combinations (AWG)						
	#22	#20	#18	#16	#14	#12	#10
RP7/ RP12	-	-	-	-	-	-	2
	-	-	-	-	-	1	1
	-	-	-	-	1	-	1
	-	-	-	-	-	2-4	-
	-	-	-	-	2-4	1	-
	-	-	-	-	1-3	2	-
	-	-	-	-	1	3	-
	-	-	-	-	3-6	-	-
	-	-	-	-	1	2-3	-
	-	-	-	-	2	1-2	-
	-	-	-	-	3	1-2	-
	-	-	-	-	4	1	-
	-	-	-	-	-	-	-
	-	-	-	-	-	-	-
	-	-	-	-	-	-	-