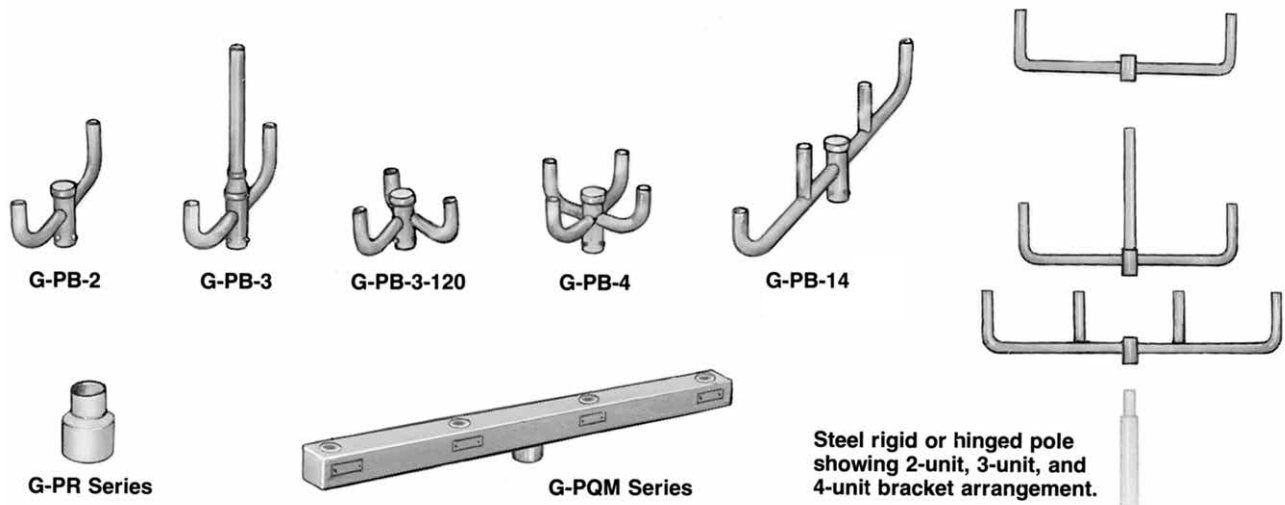


# Floodlight Mounting Brackets

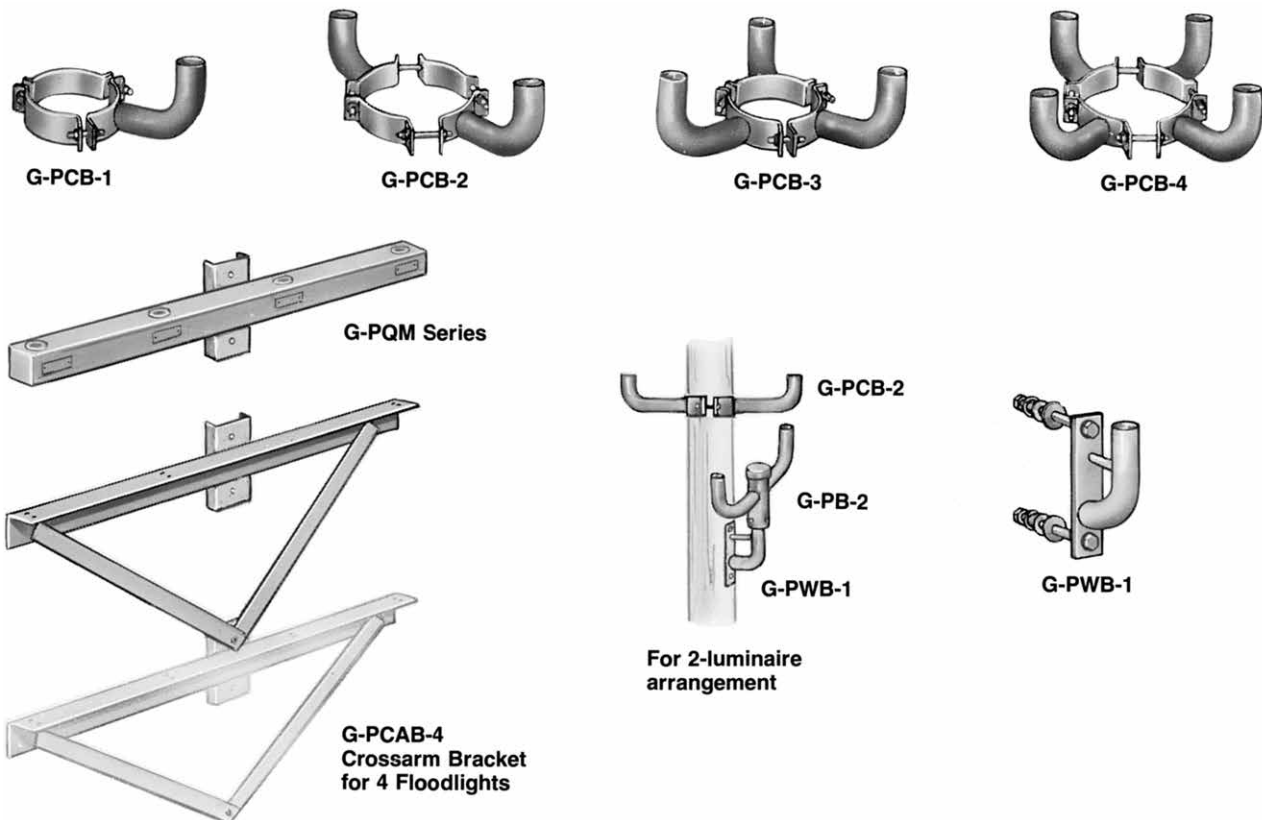
Single or Multiple Installation on Wall, Wood or Metal Poles

NEC/CEC:  
Rated for Ordinary (Unclassified) Locations

## Metal Pole Brackets



## Wood Pole Brackets



# Floodlight Mounting Brackets

## Single or Multiple Installation on Wall, Wood or Metal Poles

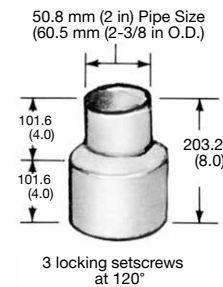
NEC/CEC:  
Rated for Ordinary (Unclassified) Locations

### Poletop Reducers

Made from high strength steel tubing, complete with 3 locking setscrews and with red-oxide prime finish.

Poletop Pipe Size Reduction mm (in)	Catalog Number
63.5 to 50.8 (2-1/2 to 2)	G-PR-2-1/2
76.2 to 50.8 (3 to 2)	G-PR-3
88.9 to 50.8 (3-1/2 to 2)	G-PR-3-1/2
101.6 to 50.8 (4 to 2)	G-PR-4
127 to 50.8 (5 to 2)	G-PR-5

Dimensions in Millimeters (Inches) — May vary. Consult your local sales representative for specifications



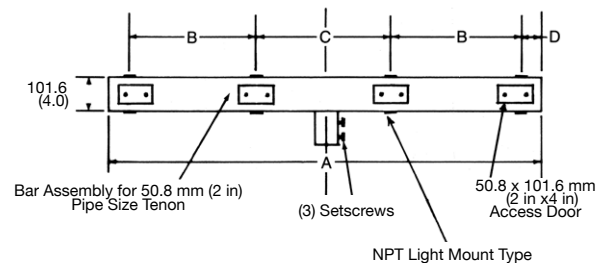
### Lite Mount Bars for 4, 8, or 12 Quartzlite or Areamaster Jr. Floodlights

Bars have 11 gauge steel body and 12 gauge steel cover. Two styles: to mount on 50.8 mm (2 in) pipe size poletop tenon, or on wood poles using thru-bolts. Welded construction, with 19.1 mm (3/4 in) N.P.S. tapped hubs. Rain-tight, with red-oxide prime finish.

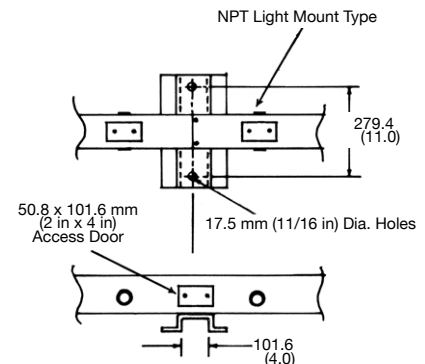
Number of Fixtures	Length A	Dim. B	Dim C	Dim. D
4	28	—	25	1-1/2
8	60	17	24-1/2	1-1/4
12	96	17	25	1-1/2

Dimensions in Millimeters (Inches) — May vary.  
Consult your local sales representative for specifications

#### For Metal Poles



#### For Wood Poles



### Dimensions For Mounting Quartzlites or Areamaster Jr.

Number of Fixtures For Mounting	Catalog Number	
	Metal Pole	Wood Pole
4 Fixtures	G-PQM-4T	G-PQM-4W
8 Fixtures	G-PQM-8T	G-PQM-8W
12 Fixtures	G-PQM-12T	G-PQM-12W