

SLATER® PLASTIC BOXES

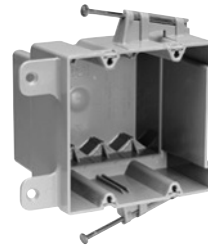
Switch & Outlet Boxes With Captive Mounting Nails on Each End with Quick/Click®



S118R



S122R

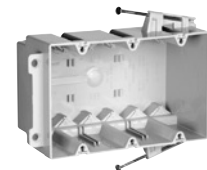


S235RAC

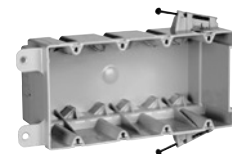


S235RACMH

CATALOG NUMBER	CU. IN. VOL.	DESCRIPTION	DIMENSIONS			WIRE FILL (AWG)	QTY. PER CARTON
			L	W	D		
SWITCH & OUTLET BOXES WITH QUICK/CLICK®							
S118R	18.0	Single gang. 2 Quick/Entries® each end.	3¾	2¼	2 ²³ / ₃₂	9 No. 14 8 No. 12 7 No. 10	100
S235RAC	35.0	Two gang. 4 Auto/Clamps® each end.	3 ³¹ / ₃₂	3 ³¹ / ₃₂	3 ³ / ₈	17 No. 14 15 No. 12 14 No. 10	50
S235RACMH	35.0	Two gang. 4 Auto/Clamps® each end. 3" depth for manufactured housing walls.	3¾	4 ¹ / ₁₆	3	17 No. 14 15 No. 12 14 No. 10	100
S354RAC	54.0	Three gang. 6 Auto/Clamps® each end.	3 ³¹ / ₃₂	5 ²⁵ / ₃₂	3	27 No. 14 24 No. 12 21 No. 10	50
S468RAC	68.0	Four gang. Rear stabilizing bar virtually eliminates inward movement. 6 Auto/Clamps® each end.	3 ¹³ / ₁₆	7 ¹³ / ₁₆	3	34 No. 14 30 No. 12 27 No. 10	25
DEEP SWITCH & OUTLET BOXES WITH QUICK/CLICK®							
S122R	22.5	Single gang deep. 2 Quick/Entries® each end. Extra deep for dimmers, GFCIs and thermostats, yet suitable for 2 x 4 construction.	3¾	2¼	3 ³ / ₈	11 No. 14 10 No. 12 9 No. 10	100



S354RAC

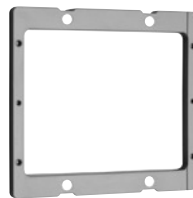


S468RAC

All boxes are UL Listed.
UL Classified for 2 Hour Fire Resistance. (Does not apply to S468RAC.)



EXT1



EXT2

CATALOG NUMBER	CU. IN. VOL.	DESCRIPTION	QTY. PER CARTON
WALL BOX EXTENSION RINGS			
EXT1	1.0	Single gang. ¼" thick. Stackable.	10
EXT2	2.0	Two gang. ¼" thick. Stackable.	10