

SLATER® PLASTIC BOXES

Switch & Outlet Boxes with Captive Mounting Nails on Each End



P118R



P118RN



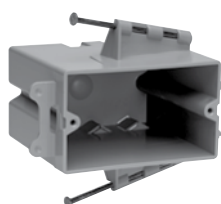
P122R



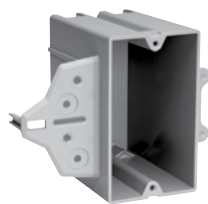
P122RN



P122N



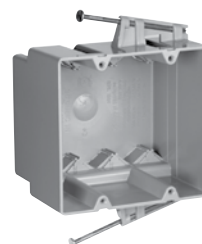
PH122R



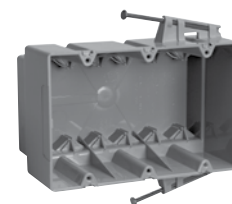
P122C



P235RAC



P235RACMH



P354RACMH

CATALOG NUMBER	CU. IN. VOL.	DESCRIPTION	DIMENSIONS			WIRE FILL (AWG)	QTY. PER CARTON
			L	W	D		
SWITCH & OUTLET BOXES WITH THREADED MOUNTING HOLES							
P118R	18.0	Single gang. 2 Quick/Entries® each end.	3¾	2¼	2 ²³ / ₃₂	9 No. 14 8 No. 12 7 No. 10	100
P118RN	18.0	Single gang. Reverse angled captive mounting nail. 2 Quick/Entries® each end. Used for manufactured housing.	3¾	2¼	2 ²³ / ₃₂	9 No. 14 8 No. 12 7 No. 10	100
P122C	22.0	Single gang. With EZ Grip – a temporary hold feature.	3¾	2¼	4	11 No. 14 10 No. 12 9 No. 10	100
PH122R	22.0	Single gang. Horizontal. Captive mounting nail each side.	3¾	2¼	3 ⁷ / ₈	11 No. 14 10 No. 12 9 No. 10	100
P235RAC	35.0	Two gang. 4 Auto/Clamps® each end.	3 ³¹ / ₃₂	3 ³¹ / ₃₂	3 ³ / ₈	17 No. 14 15 No. 12 14 No. 10	100
P235RACMH	35.0	Two gang. 4 Auto/Clamps® each end. 3" depth for manufactured housing walls.	3 ³¹ / ₃₂	3 ³¹ / ₃₂	3	17 No. 14 15 No. 12 14 No. 10	100
P354RACMH	54.0	Three gang. 6 Auto/Clamps® each end. 3 ¹ / ₁₆ " depth for manufactured housing walls.	3 ¹³ / ₁₆	5 ¹⁵ / ₁₆	3 ¹ / ₁₆	27 No. 14 24 No. 12 21 No. 10	50
DEEP SWITCH & OUTLET BOXES WITH THREADED MOUNTING HOLES							
P122R	22.5	Single gang deep. 2 Quick/Entries® each end. Extra deep for dimmers, GFCIs and thermostats, yet suitable for 2 x 4 construction.	3¾	2¼	3 ³ / ₈	11 No. 14 10 No. 12 9 No. 10	100
P122RN	22.5	Single gang deep. Reverse angled captive mounting nail. 2 Quick/Entries® each end. Extra deep for dimmers, GFCIs and thermostats, yet suitable for 2 x 4 construction.	3¾	2¼	3 ³ / ₈	11 No. 14 10 No. 12 9 No. 10	100
P122N	22.5	Single gang deep. Vertical bracket mount.	3¾	2¼	3 ³ / ₈	11 No. 14 10 No. 12 9 No. 10	100

All boxes are UL Listed.

UL Classified for 2 Hour Fire Resistance (Does not apply to P122N.)