

WEATHERPROOF BOXES & COVERS

Cast Weatherproof Covers

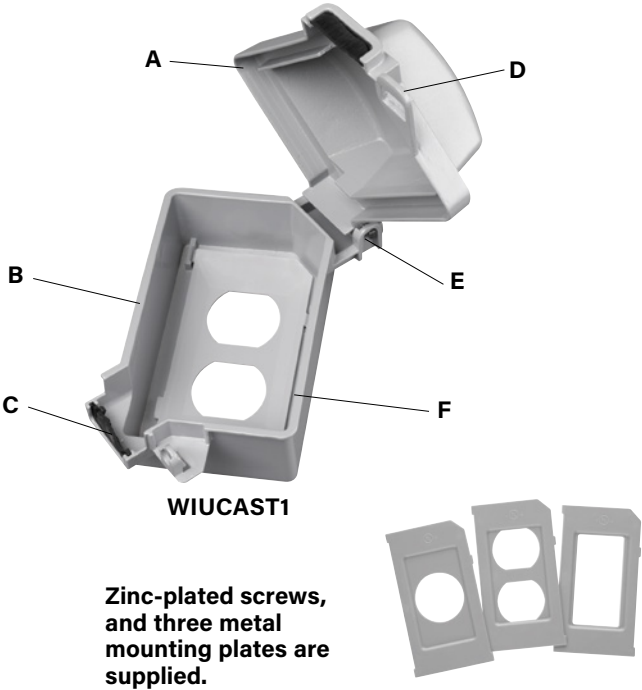
WIUCAST1

Cast Weatherproof Cover

- A. Self-closing lids** as required by UL514C42.3.
- B. Heavy-duty die-cast aluminum.**
- C. Exclusive cord flap gasket** inhibits water splash from driving rain or sprinklers.
- D. Lockable cover** accepts a standard sized padlock.
- E. Patented corner hinge** and cord opening allow vertical or horizontal installation.
- F. Preapplied gasket** easier to install, saves time, won't get lost or damaged.

Meets NEC[®] Section 406.9(B)(1) suitable for Extra Duty wet locations.

All components baked-on electrostatic, polyester, powder paint coated prior to assembly for superior corrosion resistance.



CATALOG NUMBER	COLOR	DEVICE PLATES PROVIDED	PACKAGE QUANTITY	3RD PARTY COMPLIANCE
SINGLE GANG				
WIUCAST1*	Gray		12	UL US
WIUCAST1BK	Black			
TWO GANG				
WIUCAST2	Gray		10	UL US

*WIUCAST1 accepts WIU10PK inserts.

