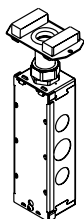


EVOLUTION™ 6AT SERIES POKE-THRU DEVICES

Evolution 6" Series Bottom Feed Center Mount Device Plates Ordering Information

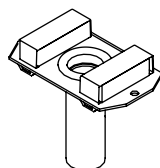
175CHA Bottom Housing Assembly



One-gang 3/4" trade size conduit housing assembly. Includes junction box attached to 3/4" trade size conduit for electrical power connections. Used in the center compartments of 6", 8" and 10" poke-thru devices.

NOTE: When using on a 6ATCFF Furniture Feed unit, 1BHA (sold separately) is required.

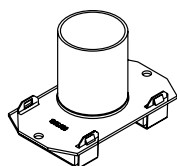
175CHA-LJB Bottom Housing Assembly



One-gang 3/4" trade size conduit housing assembly. Junction box not included. Used in the center compartments of 6", 8" and 10" poke-thru devices.

NOTE: When using on a 6ATCFF Furniture Feed unit, 1BHA (sold separately) is required.

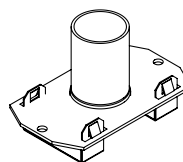
1125CHA Bottom Housing Assembly



One-gang 1 1/4" trade size conduit housing assembly. Used in the center compartments of 6", 8" and 10" poke-thru devices.

NOTE: When using on a 6ATCFF Furniture Feed unit, 1BHA (sold separately) is required.

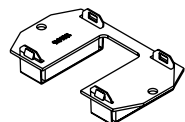
1100CHA Bottom Housing Assembly



One-gang 1" trade size conduit housing assembly. Used in the center compartments of 6", 8" and 10" poke-thru devices.

NOTE: When using on a 6ATCFF Furniture Feed unit, 1BHA (sold separately) is required.

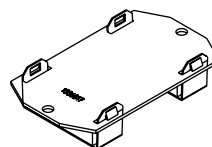
1PTHA Bottom Housing Assembly



One-gang pass through housing assembly. Designed to allow pass through of communication cables when no conduit is required. Used in the center compartments of 6", 8" and 10" poke-thru devices.

NOTE: When using on a 6ATCFF Furniture Feed unit, 1BHA (sold separately) is required.

1BLH Bottom Housing Assembly



One-gang blank housing assembly. Designed to blank off compartment when no cable pass through is required. Used in the center compartments of 6", 8" and 10" poke-thru devices.

NOTE: When using on a 6ATCFF Furniture Feed unit, 1BHA (sold separately) is required.