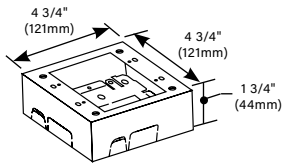


PLUGMOLD® 2000 SERIES™

Plugmold 2000 Series Ordering Information (continued)

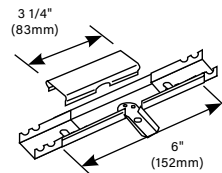
Two-Gang Device Box


PART NUMBERS:

V2048-2 (Ivory)
WH2048-2 (White)
G2048-2 (Gray)
BK2048-2 (Black)

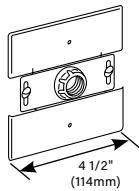
Cover has twistouts for 2000, 500 and 700 Series Raceways. Base has 1/2" trade size KO and rectangular KO for extension to wall box. Base has No.10 threaded hole for ground connection.

V2089 Side Reducing Connector



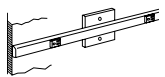
Connects 2000 Series Plugmold with 500 Series Raceway through the side of 2000 Series Plugmold.

Flush Plate Adapter


PART NUMBERS:

V2051H (Ivory)
WH2051H (White)
G2051H (Gray)
BK2051H (Black)
S2051H (Stainless Steel)

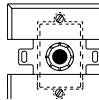
Feeds 2000 Series Plugmold from an existing wall outlet. Equipped with 1/2" (12.7mm) threaded stud, toothed lock washer for grounding, threaded hole for and conduit bushing.



Plugmold 2000 extended from wall outlet using 2051H.

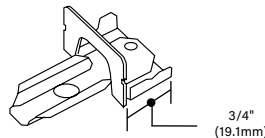


2051H fastened to horizontally mounted wall box.



2051H fastened to vertically mounted wall box.

V2089E End Reducing Connector



Connects 2000 Series Plugmold with 500 Series Raceway through the end of 2000 Series Plugmold.

Plug-In Outlet Center Unit

PART NUMBERS:

V20-C2 (6 Foot Cord)
G20-C2 (15 Foot Cord)



Six outlets, steel housing with ivory (V20-C2) or gray finish (G20-C2). 6' (1.8m) cord. Length 40" (1m). Receptacle center-to-center 6" (152mm).

2000 Series Interconnectivity Fittings

FROM	CONNECTION REQUIRED	TO	USE CATALOG NUMBER
500 Series Raceway	Side of Plugmold 2000 Series		V2089, V2048, V2048-2
500 Series Raceway	End of Plugmold 2000 Series		V2089E, V2048, V2048-2
Existing Outlet	Plugmold 2000 Series		V2051H
1/2" trade size Conduit or Armored Cable	End of Plugmold 2000 Series		V2010A2, V2010A3