

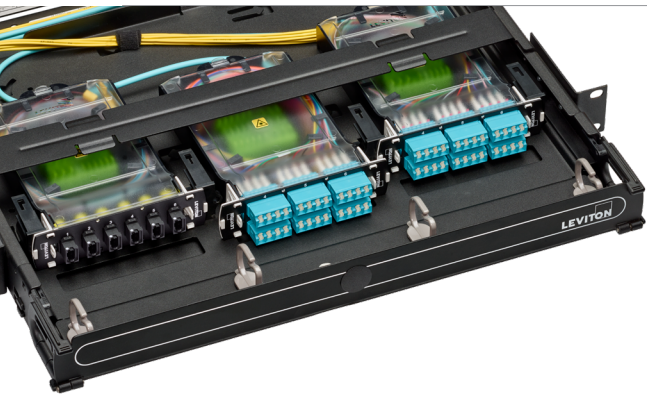


OPT-X™ Fiber Optic System

Optimized for essential connectivity in the enterprise, Leviton's standard performance SDX Premises system offers 72 fibers per rack-unit density with spliced or mechanical field terminated connectivity to meet a wide variety of application needs and deployment locations. OPT-X fiber optic systems are global solutions available everywhere.

Recommended For:

- Enterprise Building Backbones
- Campus Networks
- Rack or Wall Mount in Telecommunication Rooms
- Active DAS Network Patching



The **OPT-X SDX platform** allows for easy field termination of connectors and splicing in a standard-density footprint. SDX splice modules and adapter plates offer flexible connections and storage options to meet any project need.

Premises solutions include bulk cable and field terminated connectivity that deliver reliable, standard loss performance for campuses and enterprise networks. They are designed for installation with the OPT-X SDX platform.

Use Cases

Efficient Field Termination

Typically deployed with Leviton's loose tube or tight buffered bulk cable, the SDX Premises system offers a variety of field termination options including splice trays, splice modules, pigtailed, and mechanical fiber connectors.

Smaller Connection Channels

With standard performance connectivity, the Premises system offers the best value for point-to-point or single-patch field architectures.

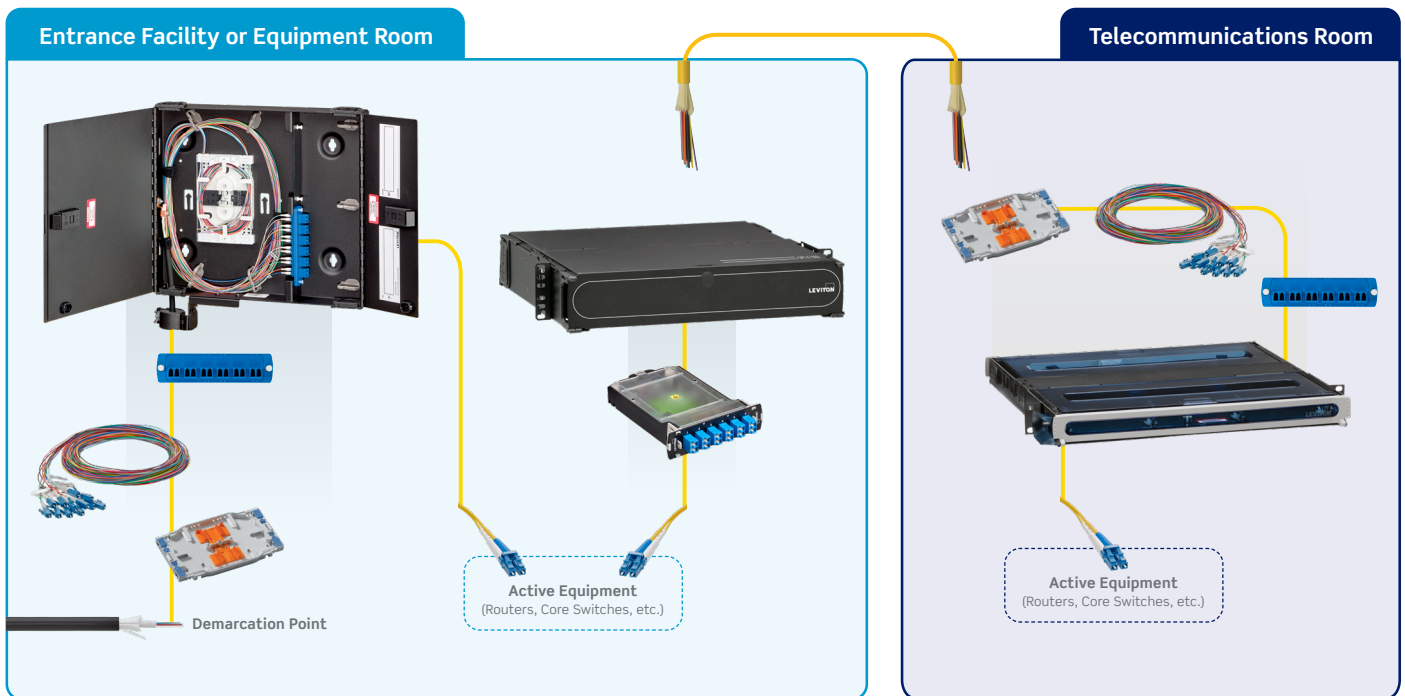
Versatile for Range of Locations

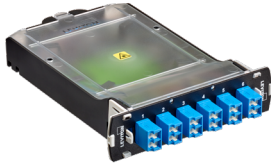
Front-loading rack-mount and wall-mount enclosures and panels come in a range of sizes, with enhanced labeling options to simplify MAC work.

Standard Density and Lower Fiber Count Networks

Ideal for typical enterprise backbones with 6 fiber to 24 fiber connections, the standard density SDX (max 72 fibers per RU) leaves ample room for regular maintenance or MACs.

Example Network





Splice Modules

OPT-X SDX Splice Modules

OPT-X SDX LC, SC, and MPO Molded Splice Modules protect and organize heat-shrink fusion spliced fibers (up to 12, 24, or 72 fibers) for installation in an SDX fiber enclosure or panel. The modular design enables faster field splicing and simple management of pigtails within the housing. Splice modules eliminate the need for individual splice trays within a fiber enclosure and provide optimal organization and slack management of fibers. Typical applications include Wide Area Networks (WAN), campus environments, high-count riser buildings, government installations, data centers, and central offices.

- Module integrates fiber adapter bulkhead (12 or 24 fibers) and splice holders, eliminating the need of splice trays
- Offered in single-mode (OS2) UPC and APC and laser-optimized multimode OM3 and OM4 fiber types
- Integrated latching tabs allow for one-handed insertion and removal from SDX enclosures and panels
- Patented internal shutters on LC adapters eliminate the need for dust plugs to reduce waste, speed up deployment, and ensure safer installations
- 12-fiber, color-coded, 900 μm tight-buffer pigtails are 1 m and pre-loaded in module per specific configuration and include splice sleeves
- Modular design allows for ease of maintenance of individual spliced fiber and allows for scaling up without impacting existing fibers
- Patented MPO pigtail assembly allows for easy routing within module and no-preparation mass fusion splicing

Splice Modules	Part No.
12-Fiber, OM3 (aqua), Duplex LC Shuttered	SPLCS-2AL
12-Fiber, OM4 (heather violet), Duplex LC Shuttered	SPLCS-2ML
12-Fiber, OM4 (aqua), Duplex LC Shuttered	SPLCS-2QL
12-Fiber, OS2 (blue), Duplex LC Shuttered	SPLCS-2LL
12-Fiber, OS2 (green), Duplex LC/APC Shuttered	SPLCS-2VL
24-fiber, OM3 (aqua), Quad LC Shuttered	SPLCS-4AL
24-fiber, OM4 (heather violet), Quad LC Shuttered	SPLCS-4ML
24-fiber, OM4 (aqua), Quad LC Shuttered	SPLCS-4QL
24-fiber, OS2 (blue), Quad LC Shuttered	SPLCS-4LL
24-fiber, OS2 (green), Quad LC/APC Shuttered	SPLCS-4VL
12-Fiber, OM4 (aqua), Duplex SC	SPSCS-2QC
12-Fiber, OS2 (blue), Duplex SC	SPSCS-2LC
12-Fiber, OS2 (green), Duplex SC/APC	SPSCS-2VC
72-Fiber, OM4, Simplex MPO (male)	SPMPS-MMP
72-Fiber, OS2, Simplex MPO (male)	SPMPS-SMP



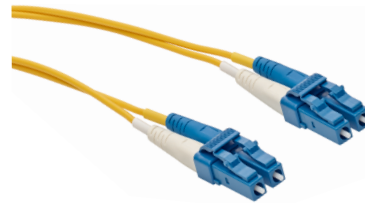
Connectors

FASTCAM™ Fiber Connectors

Leviton's FASTCAM pre-polished connectors provide precision mechanical termination of single-mode or multimode fiber.

- Terminated on 250 μm or 900 μm buffered fiber and/or 2 or 3 mm jacketed fiber
- Require no polishing or epoxy curing
- Use precision zirconia ferrules

Fiber Connectors	Part No.
FASTCAM LC OM3/4, aqua	49991-LLC
FASTCAM LC OS2, blue	49991-SLC
FASTCAM SC OM3/4, aqua	49991-LSC
FASTCAM SC OS2, blue	49991-SSC
FASTCAM SC/APC OS2, green	49991-ASC
FASTCAM LC Duplex Clip (pack of 6), Clear	49991-CLP



Patch Cords

Fiber Patch Cords

Leviton Fiber Optic Patch Cords are designed to interconnect or cross connect fiber networks.

- All connectors have precision pre-radiused zirconia ferrules
- Standard polarity is A-B

Fiber Patch Cords	Riser Part No.	LSZH Part No.
OM3, LC-LC, 2 m	5LDLC-M02	VPC-M3D1LCLC0020
OM3, LC-LC, 3 m	5LDLC-M03	VPC-M3D1LCLC0030
OM4, LC-LC, 2 m	54DLC-M02	VPC-M4D1LCLC0020
OM4, LC-LC, 3 m	54DLC-M03	VPC-M4D1LCLC0030
OS2, LC-LC, 2 m	UPDLC-S02	VPC-S2D1LCLC0020
OS2, LC-LC, 3 m	UPDLC-S03	VPC-S2D1LCLC0030
OM3, SC-SC, 2 m	5LDSC-M02	VPC-M3D1SCSC0020
OM3, SC-SC, 3 m	5LDSC-M03	VPC-M3D1SCSC0030
OM4, SC-SC, 2 m	54DSC-M02	VPC-M4D1SCSC0020
OM4, SC-SC, 3 m	54DSC-M03	VPC-M4D1SCSC0030
OS2, SC-SC, 2 m	UPDSC-S02	VPC-S2D1SCSC0020
OS2, SC-SC, 3 m	UPDSC-S03	VPC-S2D1SCSC0030
OS2, SC/APC-SC/APC, 2 m	APSSC-S02	VPC-S2D1ACAC0020
OS2, SC/APC-SC/APC, 3 m	APSSC-S03	VPC-S2D1ACAC0030

Note: Additional lengths available