



Conduit Bodies Quick Reference

For More Information See Pages E12-E15

Weatherproof

FORM 7 GRAY IRON CONDUIT BODIES



LB7-50
LB7-75
LB7-100
LB7-125
LB7-150
LB7-200
LB7-250
LB7-300
LB7-350
LB7-400



LL7-50
LL7-75
LL7-100
LL7-125
LL7-150
LL7-200
LL7-250
LL7-300
LL7-350
LL7-400



LR7-50
LR7-75
LR7-100
LR7-125
LR7-150
LR7-200
LR7-250
LR7-300
LR7-350
LR7-400



C7-50
C7-75
C7-100
C7-125
C7-150
C7-200
C7-250
C7-300



T7-50
T7-75
T7-100
T7-125
T7-150
T7-200
T7-250
T7-300
T7-350
T7-400



SCG7-50
SCG7-75
SCG7-100
SCG7-125
SCG7-150
SCG7-200
SCG7-250/300
SCG7-350/400



GICG7-50
GICG7-75
GICG7-100
GICG7-125
GICG7-150
GICG7-200
GICG7-250/300
GICG7-350/400

FORM 8 GRAY IRON CONDUIT BODIES



LB8-50
LB8-75
LB8-100
LB8-125
LB8-150
LB8-200
LB8-250
LB8-300
LB8-350
LB8-400



LL8-50
LL8-75
LL8-100
LL8-125
LL8-150
LL8-200
LL8-250
LL8-300



LR8-50
LR8-75
LR8-100
LR8-125
LR8-150
LR8-200
LR8-250
LR8-300



C8-50
C8-75
C8-100
C8-125
C8-150
C8-200
C8-250
C8-300



T8-50
T8-75
T8-100
T8-125
T8-150
T8-200
T8-250
T8-300



SCG8-50
SCG8-75
SCG8-100
SCG8-125
SCG8-150
SCG8-200
SCG8-250/300
SCG8-350/400



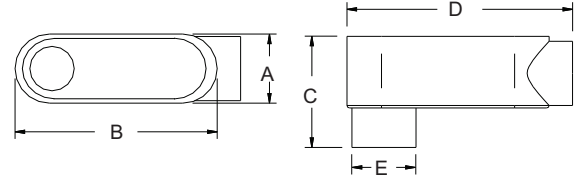
GICG8-50
GICG8-75
GICG8-100
GICG8-125
GICG8-150
GICG8-200
GICG8-250/300
GICG8-350/400

SAND CAST CLASS 30 GRAY IRON ALLOY
THREADED CONDUIT BODIES
"LB" SERIES
FORM 7

PRODUCT FEATURES

- ▶ Electroplated Zinc
- ▶ Flat back design for maximum internal wiring volume
- ▶ Interchangeable with other Form 7 conduit bodies
- ▶ Suitable for wet location when used with Gasket and Cover
- ▶ Use with easy Clip-on Covers
- ▶ NPT Thread Hubs

Cat. No.	Trade Size	DIMENSIONS - LB SERIES					Std. Pkg.	Master Ctn.
		A	B	C	D	E		
LB7-50	1/2"	1-3/8"	3-11/16"	2-3/16"	4-1/2"	1-1/4"	10	50
LB7-75	3/4"	1-5/8"	4-5/16"	2-1/2"	5-1/4"	1-1/2"	5	25
LB7-100	1"	1-13/16"	5-1/16"	2-7/8"	6-3/16"	1-13/16"	5	25
LB7-125	1-1/4"	2-3/16"	5-9/16"	3-1/4"	6-1/2"	2-3/16"	1	10
LB7-150	1-1/2"	2-7/16"	6-1/16"	3-9/16"	7-1/16"	2-7/16"	1	10
LB7-200	2"	3"	7-1/16"	4-1/8"	8-1/8"	3"	1	5
LB7-250	2-1/2"	4-1/4"	9-1/16"	5-1/4"	10-11/16"	3-7/16"	-	1
LB7-300	3"	4-1/4"	9-1/16"	6"	10-11/16"	4-1/4"	-	1
LB7-350	3-1/2"	5-5/16"	11"	6-9/16"	12-3/4"	4-3/4"	-	1
LB7-400	4"	5-5/16"	11"	7-1/8"	12-3/4"	5-1/4"	-	1

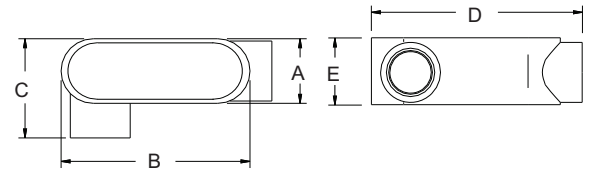


SAND CAST CLASS 30 GRAY IRON ALLOY
THREADED CONDUIT BODIES
"LR" SERIES
FORM 7

PRODUCT FEATURES

- ▶ Electroplated Zinc
- ▶ Flat back design for maximum internal wiring volume
- ▶ Interchangeable with other Form 7 conduit bodies
- ▶ Suitable for wet location when used with Gasket and Cover
- ▶ Use with easy Clip-on Covers
- ▶ NPT Thread Hubs

Cat. No.	Trade Size	DIMENSIONS - LR SERIES					Std. Pkg.	Master Ctn.
		A	B	C	D	E		
LR7-50	1/2"	1-7/16"	3-11/16"	1-7/16"	4-1/2"	1-3/8"	10	50
LR7-75	3/4"	1-5/8"	4-5/16"	2-1/2"	5-1/4"	1-5/8"	5	25
LR7-100	1"	1-13/16"	5-1/16"	2-3/4"	6-3/16"	1-13/16"	5	25
LR7-125	1-1/4"	2-3/16"	5-9/16"	3-1/8"	6-1/2"	2-3/16"	1	10
LR7-150	1-1/2"	2-7/16"	6-1/16"	3-3/8"	7-1/16"	2-7/16"	1	10
LR7-200	2"	3"	7-1/16"	4"	8-1/8"	3"	1	5
LR7-250	2-1/2"	4-1/4"	9-1/16"	5-7/8"	10-11/16"	4-1/4"	-	1
LR7-300	3"	4-1/4"	9-1/16"	5-7/8"	10-11/16"	4-1/4"	-	1
LR7-400	4"	5-5/16"	11"	7"	12-3/4"	5-5/16"	-	1



SAND CAST CLASS 30 GRAY IRON ALLOY
THREADED CONDUIT BODIES
"LL" SERIES
FORM 7

PRODUCT FEATURES

- ▶ Electroplated Zinc
- ▶ Flat back design for maximum internal wiring volume
- ▶ Interchangeable with other Form 7 conduit bodies
- ▶ Suitable for wet location when used with Gasket and Cover
- ▶ Use with easy Clip-on Covers
- ▶ NPT Thread Hubs

Cat. No.	Trade Size	DIMENSIONS - LL SERIES					Std. Pkg.	Master Ctn.
		A	B	C	D	E		
LL7-50	1/2"	1-7/16"	3-11/16"	1-7/16"	4-1/2"	1-3/8"	10	50
LL7-75	3/4"	1-5/8"	4-5/16"	2-1/2"	5-1/4"	1-5/8"	5	25
LL7-100	1"	1-13/16"	5-1/16"	2-3/4"	6-3/16"	1-13/16"	5	25
LL7-125	1-1/4"	2-3/16"	5-9/16"	3-1/8"	6-1/2"	2-3/16"	1	10
LL7-150	1-1/2"	2-7/16"	6-1/16"	3-3/8"	7-1/16"	2-7/16"	1	10
LL7-200	2"	3"	7-1/16"	4"	8-1/8"	3"	1	5
LL7-250	2-1/2"	4-1/4"	9-1/16"	5-7/8"	10-11/16"	4-1/4"	-	1
LL7-300	3"	4-1/4"	9-1/16"	5-7/8"	10-11/16"	4-1/4"	-	1
LL7-400	4"	5-5/16"	11"	7"	12-3/4"	5-5/16"	-	1

