



Orbit carries an extensive variety of Fastening and Support products for electrical and datacom installations. Many of Orbit's Fasteners are composed of Spring Steel material, which are incredibly versatile, and often require no tools to install. Orbit constantly evaluates its product mix to ensure contractors have access to the products they need. Our vast Fastener and Support selection includes Spring Steel Cable & Conduit Clips, Wall Mounted Box Brackets, Ceiling Hangers & Plates, Datacom Support Products, and more.

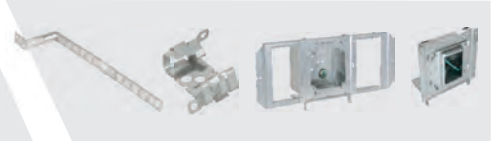
## Cable & Conduit



## Straps



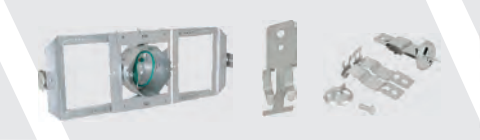
## Stud Wall



## Box & Conduit Support



## T-Grid Clips & Hangers



## Bar Hangers



## Beam & Purlin



## Datacom & Low Voltage



## Accessories



Electrical Fasteners

## MATERIALS

### SPRING STEEL & SHEET STEEL



Spring Steel



Sheet Steel



Orbit's Fasteners are available in a variety of sizes and two basic steel materials.



## SPRING STEEL

### CONDUIT TO FLANGE CLIPS BOTTOM MOUNT, SNAP CLOSE

#### PRODUCT FEATURES

- ▶ Supports conduit/pipe or cable from beam flanges
- ▶ Snap-close Clip can pivot through 360°
- ▶ Requires only a hammer to install

Cat. No.	Flange Thickness	EMT/Rigid Size	FMC Size	MC/AC Size	Static Load (lbs.)	Std. Pkg.
F6M24	1/8" to 1/4"	-	3/8"	14/2 to 12/3	75	100
F6M58	5/16" to 1/2"	-	3/8"	14/2 to 12/3	75	100
F6M912	9/16" to 3/4"	-	3/8"	14/2 to 12/3	75	100
F812M24	1/8" to 1/4"	1/2", 3/4"	-	-	75	100
F812M58	5/16" to 1/2"	1/2", 3/4"	-	-	75	100
F812M912	9/16" to 3/4"	1/2", 3/4"	-	-	75	100
F16M24	1/8" to 1/4"	1"	-	-	75	100
F16M912	9/16" to 3/4"	1"	-	-	75	50



## SPRING STEEL

### CONDUIT TO FLANGE CLIPS SIDE MOUNT, SNAP CLOSE

#### PRODUCT FEATURES

- ▶ Supports conduit/pipe or cable from beam flanges
- ▶ Snap-close Clip can pivot through 360°
- ▶ Requires only a hammer to install

Cat. No.	Flange Thickness	EMT/Rigid Size	FMC Size	MC/AC Size	Static Load (lbs.)	Std. Pkg.
F6M24SM	1/8" to 1/4"	-	3/8"	14/2 to 12/3	25	100
F6M58SM	5/16" to 1/2"	-	3/8"	14/2 to 12/3	25	100
F6M912SM	9/16" to 3/4"	-	3/8"	14/2 to 12/3	25	100
F812M24SM	1/8" to 1/4"	1/2", 3/4"	-	-	25	100
F812M58SM	5/16" to 1/2"	1/2", 3/4"	-	-	25	100
F812M912SM	9/16" to 3/4"	1/2", 3/4"	-	-	25	100
F16M24SM	1/8" to 1/4"	1"	-	-	25	100
F16M58SM	5/16" to 1/2"	1"	-	-	25	100
F16M912SM	9/16" to 3/4"	1"	-	-	25	100
F20M24SM	1/8" to 1/4"	1-1/4"	-	-	25	100
F20M58SM	5/16" to 1/2"	1-1/4"	-	-	25	100
F20M912SM	9/16" to 3/4"	1-1/4"	-	-	25	100
F24M24SM	1/8" to 1/4"	1-1/2"	-	-	25	50
F24M58SM	5/16" to 1/2"	1-1/2"	-	-	25	50
F24M912SM	9/16" to 3/4"	1-1/2"	-	-	25	50
F32M24SM	1/8" to 1/4"	2"	-	-	25	50
F32M58SM	5/16" to 1/2"	2"	-	-	25	50
F32M912SM	9/16" to 3/4"	2"	-	-	25	50



## SPRING STEEL

### CONDUIT TO ANGLE PURLIN CLIP

#### PRODUCT FEATURES

- ▶ Provides attachment for conduit/pipe or cable to angle purlins
- ▶ Snap-close Clip can pivot through 360°
- ▶ Requires only a hammer to install



Cat. No.	EMT/Rigid Size	Flange Thickness	Static Load (lbs.)	Std. Pkg.
F123812M	1/2", 3/4"	3/32" MAX	100	100