



Orbit carries an extensive variety of Fastening and Support products for electrical and datacom installations. Many of Orbit's Fasteners are composed of Spring Steel material, which are incredibly versatile, and often require no tools to install. Orbit constantly evaluates its product mix to ensure contractors have access to the products they need. Our vast Fastener and Support selection includes Spring Steel Cable & Conduit Clips, Wall Mounted Box Brackets, Ceiling Hangers & Plates, Datacom Support Products, and more.

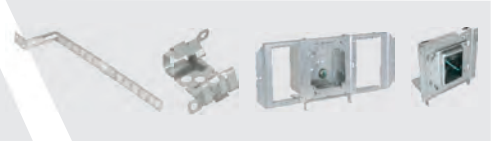
## Cable & Conduit



## Straps



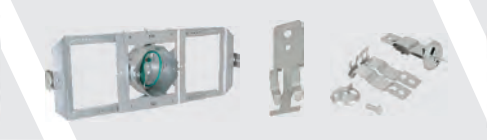
## Stud Wall



## Box & Conduit Support



## T-Grid Clips & Hangers



## Bar Hangers



## Beam & Purlin



## Datacom & Low Voltage



## Accessories



Electrical Fasteners

## MATERIALS

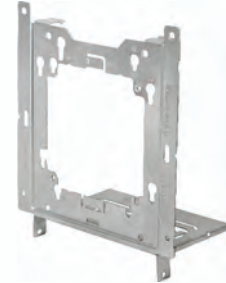
### SPRING STEEL & SHEET STEEL



Spring Steel



Sheet Steel



Orbit's Fasteners are available in a variety of sizes and two basic steel materials.

# F34 | Beam & Purlin



## SPRING STEEL MULTI-FUNCTION CLIPS

### PRODUCT FEATURES

- ▶ Provides attachment of conduit and boxes
- ▶ Supports #10-24 and 1/4"-20 threaded bridge rings

Cat. No.	Flange Thickness	Rod/Wire Size	Hole Size	Screw Size	Static Load (lbs.)		Std. Pkg.
					Flange	Drop Rod/Wire	
F4Z34	1/8" to 3/8"	1/4" Rod #12 to #8 Wire	#10-24, Threaded 1/4"-20, Threaded 1/4", Plain	-	25	20	100
F4Z4S	1/8" to 3/8"	1/4" Rod #12 to #8 Wire	-	1/4"-20	25	20	100
F6Z34	3/8" to 7/16"	3/8" Rod	#10-24, Threaded 1/4"-20, Threaded 1/4", Plain	-	25	20	100
F6Z4S	3/8" to 7/16"	3/8" Rod	-	1/4"-20	25	20	100



## SPRING STEEL VERTICAL PURLIN CLIP

### PRODUCT FEATURES

- ▶ Fits vertical purlins and bar joist
- ▶ Provides attachment for wire, S-hooks, chain to flanges
- ▶ Requires only a hammer to install

Cat. No.	Flange Thickness	Hole Size	Static Load (lbs.)	Std. Pkg.
FVF14	1/16" to 1/4"	1/4", Plain	160	100



## SPRING STEEL ANGLE PURLIN CLIP

### PRODUCT FEATURES

- ▶ Compensates angle of purlin
- ▶ Provides attachment for wire, S-hooks, chain to flanges
- ▶ Requires only a hammer to install

Cat. No.	Flange Thickness	Hole Size	Static Load (lbs.)	Std. Pkg.
FAF14	1/16" to 1/4"	1/4", Plain	100	100



## SPRING STEEL ROD TO ANGLE PURLIN CLIPS

### PRODUCT FEATURES

- ▶ Compensates angle of purlin
- ▶ Provides attachment for threaded rod to purlins
- ▶ Requires only a hammer to install

Cat. No.	Flange Thickness	Hole Size	Static Load (lbs.)	Std. Pkg.
FAF146TI	1/16" to 1/4"	1/4", Threaded	100	100
FAF144TI	1/16" to 1/4"	3/8", Threaded	100	100
FAF146T	1/16" to 1/4"	3/8", Plain	100	100

