



Orbit carries an extensive variety of Fastening and Support products for electrical and datacom installations. Many of Orbit's Fasteners are composed of Spring Steel material, which are incredibly versatile, and often require no tools to install. Orbit constantly evaluates its product mix to ensure contractors have access to the products they need. Our vast Fastener and Support selection includes Spring Steel Cable & Conduit Clips, Wall Mounted Box Brackets, Ceiling Hangers & Plates, Datacom Support Products, and more.

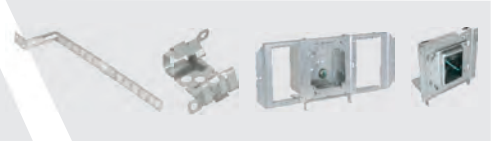
## Cable & Conduit



## Straps



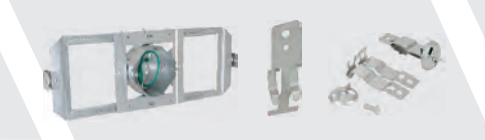
## Stud Wall



## Box & Conduit Support



## T-Grid Clips & Hangers



## Bar Hangers



## Beam & Purlin



## Datacom & Low Voltage



## Accessories



Electrical Fasteners

## MATERIALS

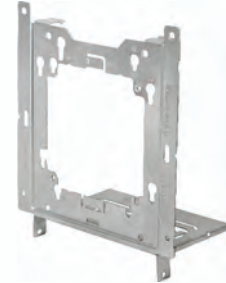
### SPRING STEEL & SHEET STEEL



Spring Steel



Sheet Steel



Orbit's Fasteners are available in a variety of sizes and two basic steel materials.

## SPRING STEEL CONDUIT TO FLANGE CLIPS BOTTOM MOUNT, PUSH IN

### PRODUCT FEATURES

- ▶ Supports conduit/pipe or cable from beam flanges
- ▶ Push-in Clip can pivot through 360°
- ▶ Requires only a hammer to install

Cat. No.	Flange Thickness	EMT Size	Rigid Size	Static Load (lbs.)	Std. Pkg.
F8P24	1/8" to 1/4"	1/2"	-	25	100
F8P58	5/16" to 1/2"	1/2"	-	25	100
F8P912	9/16" to 3/4"	1/2"	-	25	50
F12P24	1/8" to 1/4"	3/4"	1/2"	25	100
F12P58	5/16" to 1/2"	3/4"	1/2"	25	100
F12P912	9/16" to 3/4"	3/4"	1/2"	25	100
F16P24	1/8" to 1/4"	1"	3/4"	25	100
F16P58	5/16" to 1/2"	1"	3/4"	25	50
F16P912	9/16" to 3/4"	1"	3/4"	25	50



## SPRING STEEL CONDUIT TO FLANGE CLIPS SIDE MOUNT, PUSH IN

### PRODUCT FEATURES

- ▶ Supports conduit/pipe or cable from beam flanges
- ▶ Push-in Clip can pivot through 360°
- ▶ Requires only a hammer to install

Cat. No.	Flange Thickness	EMT Size	Rigid Size	Static Load (lbs.)	Std. Pkg.
F8P24SM	1/8" to 1/4"	1/2"	-	15	100
F8P58SM	5/16" to 1/2"	1/2"	-	15	100
F8P912SM	9/16" to 3/4"	1/2"	-	15	100
F12P24SM	1/8" to 1/4"	3/4"	1/2"	15	100
F12P58SM	5/16" to 1/2"	3/4"	1/2"	15	100
F12P912SM	9/16" to 3/4"	3/4"	1/2"	15	50
F16P24SM	1/8" to 1/4"	1"	3/4"	15	100
F16P58SM	5/16" to 1/2"	1"	3/4"	15	100
F16P912SM	9/16" to 3/4"	1"	3/4"	15	50



## SPRING STEEL CABLE/CONDUIT TO ROD/WIRE CLIPS, SNAP CLOSE

### PRODUCT FEATURES

- ▶ Provides attachment of conduit and boxes
- ▶ Snap-close Clip can pivot through 360°
- ▶ Easy Installation

Cat. No.	EMT/Rigid Size	FMC Size	MC/AC Size	Flange Thickness	Rod Size	Wire Size	Std. Pkg.
F4Z346M	-	3/8"	14/2 to 12/3	1/8" to 3/8"	1/4"	#12	100
F4Z34812M	1/2", 3/4"	-	-	1/8" to 3/8"	1/4"	#12	100
F6Z34812M	1/2", 3/4"	-	-	3/8" to 7/16"	3/8"	-	100
F4Z3416M	1"	-	-	1/8" to 3/8"	1/4"	#12	100
F6Z3416M	1"	-	-	3/8" to 7/16"	3/8"	-	100

