



Orbit carries an extensive variety of Fastening and Support products for electrical and datacom installations. Many of Orbit's Fasteners are composed of Spring Steel material, which are incredibly versatile, and often require no tools to install. Orbit constantly evaluates its product mix to ensure contractors have access to the products they need. Our vast Fastener and Support selection includes Spring Steel Cable & Conduit Clips, Wall Mounted Box Brackets, Ceiling Hangers & Plates, Datacom Support Products, and more.

Cable & Conduit



Straps



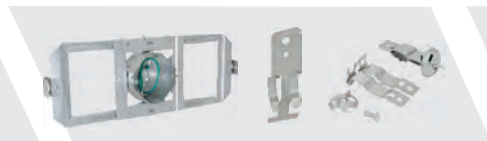
Stud Wall



Box & Conduit Support



T-Grid Clips & Hangers



Bar Hangers



Beam & Purlin



Datacom & Low Voltage



Accessories



MATERIALS

SPRING STEEL & SHEET STEEL



Spring Steel



Sheet Steel

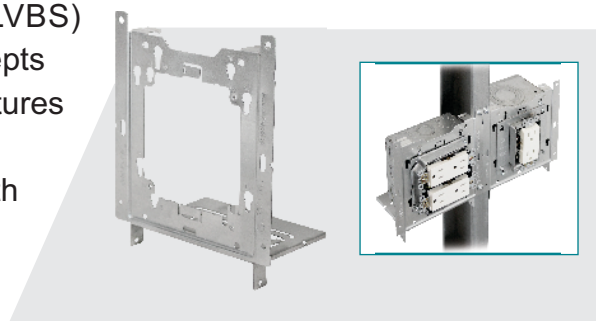


Orbit's Fasteners are available in a variety of sizes and two basic steel materials.



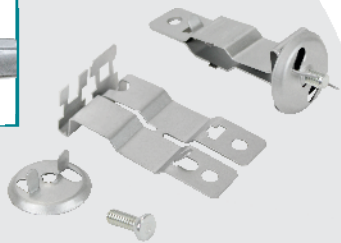
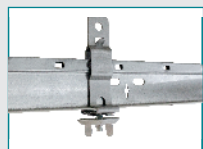
Universal Mounting Adapter with Back Support | Pg. F18

Universal Mounting Adapter with Back Support (UMA-LVBS) is one of the few mounting adapters of its kind that accepts 4", 4-11/16", and now 5" square boxes. UMA-LVBS features a unique keyhole pattern that allows any size box to be turned 90°. Keyholes also allow 4" rings to be paired with any 4-11/16" or 5" square box. Integrated back support for up to 6" stud depths. Mounts direct-to-stud or between studs with SSB-T5. The adapter, boxes and/or rings to all be mounted vertically or horizontally to facilitate different applications!



Independent Acoustical Support Clips | Pg. F27

Independent Acoustical Support Clips provide a means to support lighting fixtures from common 15/16" T-grid ceiling channel. ISC requires no tools to install and can support fixtures 65 lbs. or under. Each ISC kit includes a break apart T-grid perimeter clip which cinches both sides of the channel and includes pre-punched holes for branch line restraints. Also includes 5/8" long screw and washer-wingnut.



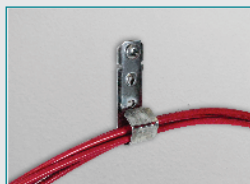
Spring Steel Beam Clamps | Pg. F33

Spring Steel Beam Clamps make it easy to suspend threaded rod from beam flanges. BCSS includes a set screw with universal head and features serrated teeth that clamp tightly to beam flanges up to 1/2" thick. BCSS also features 7/16" thru-hole for 1/4" or 3/8" threaded rod, and will hold up to 100 lbs.



Datacom Cable J-Hooks | Pg. F37

Datacom Cable J-Hooks provide superior support for Cat 5E, Cat 6, Cat 6A, Cat 7 and fiber optic network cables. CAT Series J-Hooks are available in 3/4" thru 4" diameters and feature rounded edges for proper cable bend radius. Prepunched holes allow for attachment of rod clips or beam clamps.





SPRING STEEL INDEPENDENT SUPPORT CLIP

PRODUCT FEATURES

- ▶ Wing-Nut included
- ▶ Independent support of fixtures
- ▶ No tools required to install

Cat. No.	T-Grid Size	Screw Size	Static Load (lbs.)	Std. Pkg.
ISC	15/16"	1/4"-20 X 9/16"	65	100



SPRING STEEL TWIST CLIP WITH WING NUT

PRODUCT FEATURES

- ▶ Wing-Nut included
- ▶ Supports electrical fixtures from acoustical T-grid
- ▶ No tools required to install

Cat. No.	T-Grid Size	Screw Size	Static Load (lbs.)	Std. Pkg.
F4G16	15/16"	1/4"-20 X 9/16"	50	100



SPRING STEEL TWIST CLIP WITH PLAIN HOLE

PRODUCT FEATURES

- ▶ Supports wire, S-hooks or chain from T-Grid
- ▶ No tools required to install

Cat. No.	T-Grid Size	Hole Size	Static Load (lbs.)	Std. Pkg.
F4G16H	15/16"	1/4", Plain	40	100

