

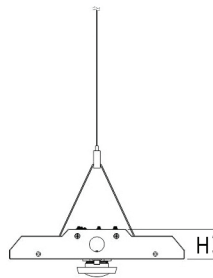
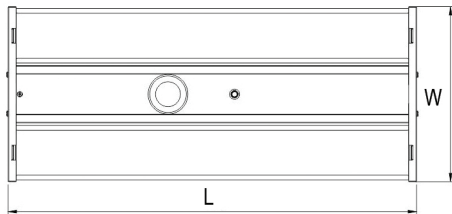
LLHB2-FL SERIES

NEW



Suspension Wire Kit Included!

- 120~277V
- UL Listed for Damp Locations
- Lightweight, Aluminum Alloy Housing
- UV Resistant White Powder Coat Finish
- Frosted Polycarbonate Lens Covers
- 110° Beam Angle
- Type VS Distribution
- Ambient Operating Temp: -40°C / -40°F to 55°C / 131°F
- Includes 5.3ft Adjustable Suspension Kit
- 50,000 Life Hours
- 5 Year Limited Warranty
- Dimmable to 10%
- 90-min. Emergency Battery Backup Driver / Battery Set Sold Separately (LLHB2-EM)
- Motion Sensor (LLHB2-M) and Programmable Remote (LLHB2-RC) Sold Separately



Optional Accessories



LLHB2-M

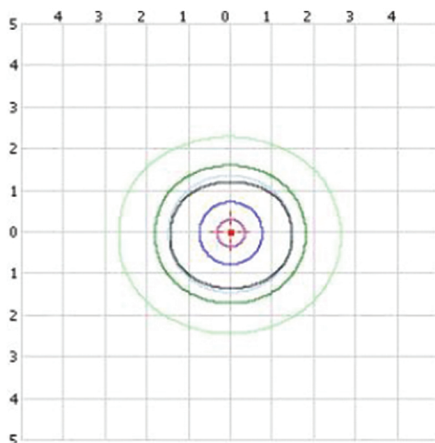


LLHB2-RC

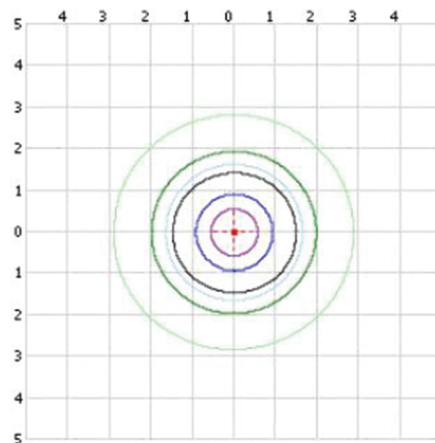


LLHB2-EM

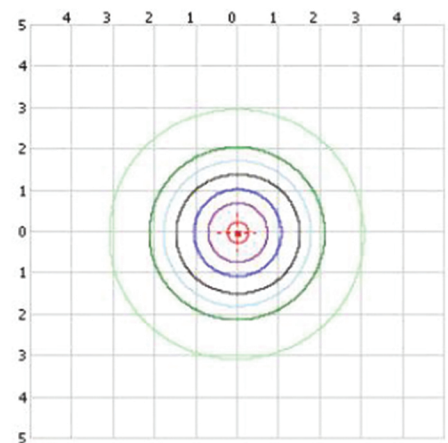
| Catalog No. | System Wattage | Efficacy | Color Temp. | Emission Color | Lumens | CRI | Wattage Equivalent | Fixture Dimensions |
|------------------|----------------|----------|-------------|----------------|----------|-----|--------------------|------------------------------------|
| LLHB2-FL-90W-CW | 90W | 140 lm/W | 5000K | Cool White | 12600 lm | 80+ | 400W MH | 10-1/4" (W) x 1-3/4" (H) x 24" (L) |
| LLHB2-FL-130W-CW | 130W | 142 lm/W | 5000K | Cool White | 18500 lm | 80+ | 400W MH | 19-5/8" (W) x 1-3/4" (H) x 24" (L) |
| LLHB2-FL-180W-CW | 180W | 136 lm/W | 5000K | Cool White | 24500 lm | 80+ | 750W MH | 19-5/8" (W) x 1-3/4" (H) x 24" (L) |



LLHB2-FL-90W-CW



LLHB2-FL-130W-CW



LLHB2-FL-180W-CW

■ 20 fc ■ 1 fc
■ 10 fc ■ 0.5 fc
■ 5 fc ■ 0.1 fc ■ 50% Max Cd
 Distance in units of mount height (20ft) --- Max Cd



DIMMABLE