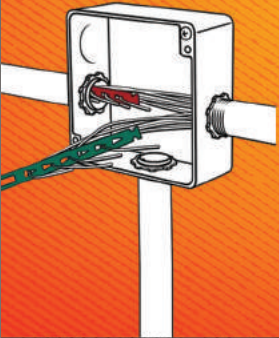


# Snatch Straps

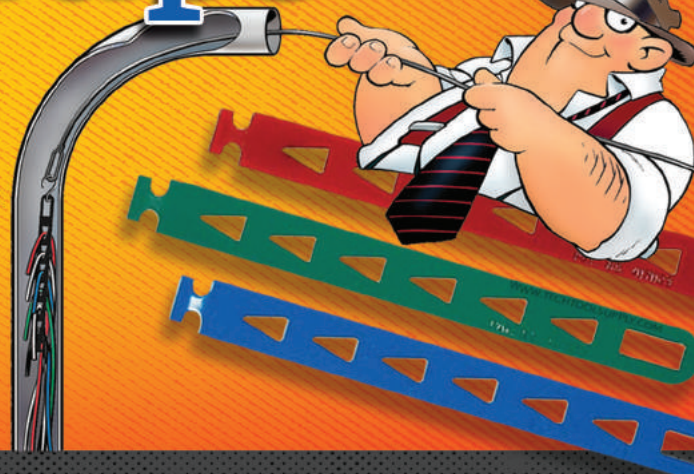
Use the Snatch Strap for fast attachment on conduit pulls. No stripping or taping required!



- Pull more conductors with less effort
- Can be chained together
- Color coded for easy circuit and phase identification

#### MFG Note:

Snatch Strap handles #22 - #12 AWG. If additional wires are required simply add additional straps.



# FISH-HEADS

Part# 69010



Tired of fish tapes getting snagged or breaking?  
Try Fish Heads to fix and improve your broken fish tape end.

#### FEATURES:

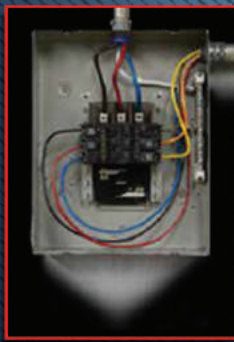
- Complete spherical head reduces the chance of getting stuck
- Tapered back end
- Tested 500+ pounds
- Reusable



# PHASE

## WIRE MARKER

**Quickly** and **conveniently** use the UPhase wire marker to color cords and wires for fast and easy organization



- Electrical Panels
- Color Coding Wire
- Identifying Wiring Circuits
- CAT-5 Ethernet Cable
- Audio/Video Cable
- HDMI Cable
- Automotive wire

#### Part #

- 52490BK - Black - 4 pack
- 52490BL - Blue - 4 pack
- 52490RD - Red - 4 pack
- 52490WT - White - 4 pack
- 52490GR - Green - 4 pack
- 52491 - 4 pack Kit (blue, red, white, green)
- 52493 - 4 pack Kit (gray, orange, yellow, brown)
- 52492 - Replacement tip

**BEFORE** **AFTER**

