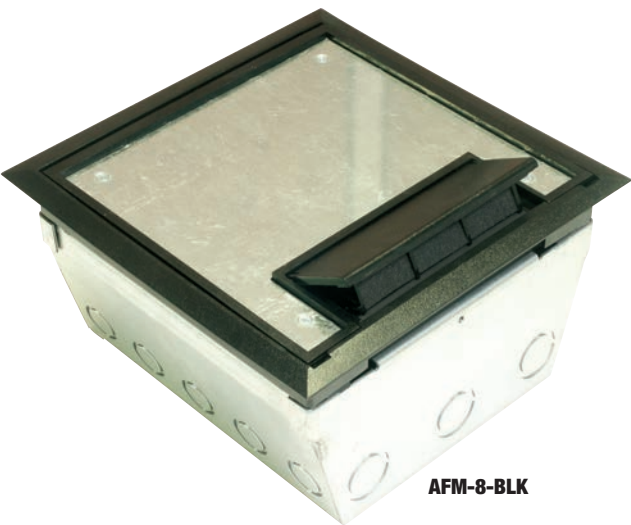


Access Floor Modules

AFM-8 Series Access Floor Module



AFM-8-BLK






Specifications



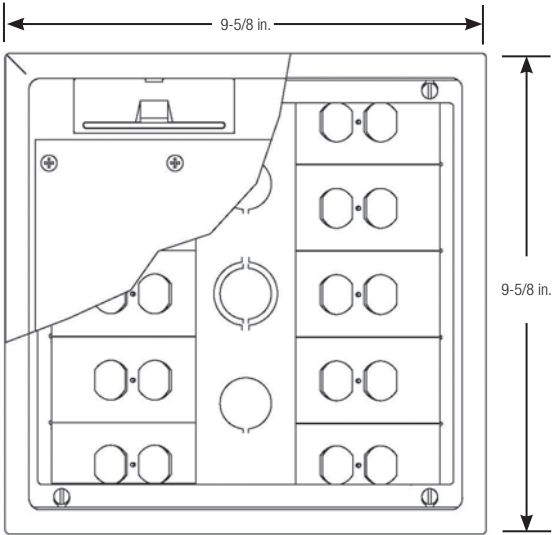
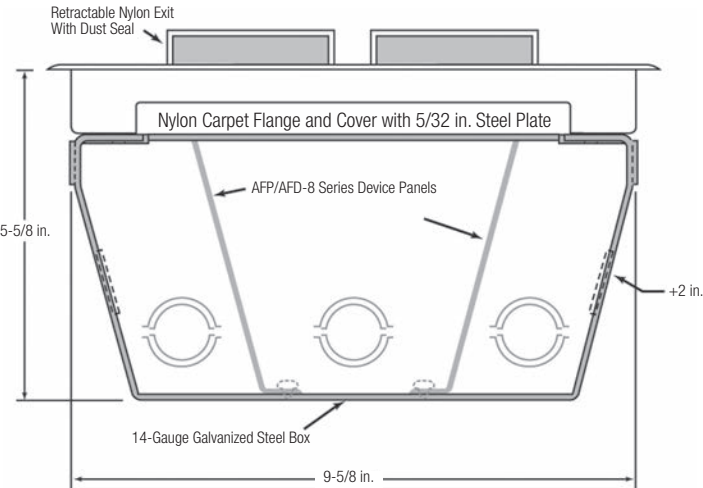
Access Floor Module Size		AFM-8
AFM Depth		5-5/8 in.
Access Floor Cut-Out		9-5/8 in. x 9-5/8 in.
AFM Cover Size		9-3/8 in. x 9-3/8 in.
AFM Cover Access Area		74 sq. in.
Box Volume (Less Panels)		325 cu. in.
Device Compartment Volume	45° Power	—
	60° Power	—
	Center Data	—
	Power	15.75 cu. in.
Volume	Data	15.75 cu. in.
Base Opening		—
Cover/Carpet Flange Material		Nylon-6
Body Material		14 gauge galvanized steel
Max. No. of Device Panels		10

Devices not included  
Nylon carpet flange available in Black, Grey, Brown or Beige



	POWER PANELS					DATA PANELS		ACCESSORIES		
AFM-8-BLK GRY BRN BGE	AFP-8A* Single duplex		AFP-8G* Single GFCI		AFP-8B Blank		AFD-8 3RJ Keystone		AFR-8 Mounting flange	
		Used to correct opening in floor. Not required for all installations								

\*Not CSA Certified



AFM-8

Shown with optional panels (sold separately)