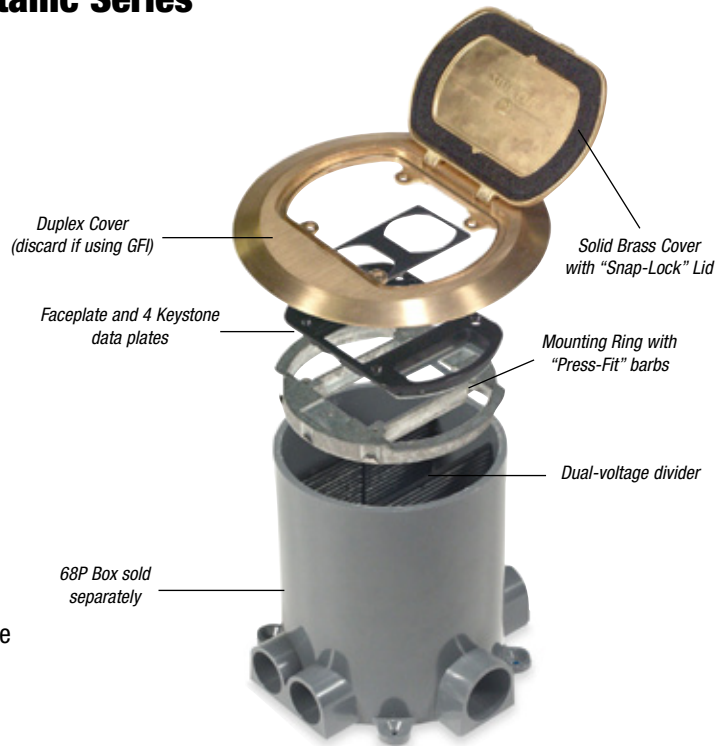


Flush Service Floor Boxes

Dual-Voltage Kits for 68-P Non-Metallic Series



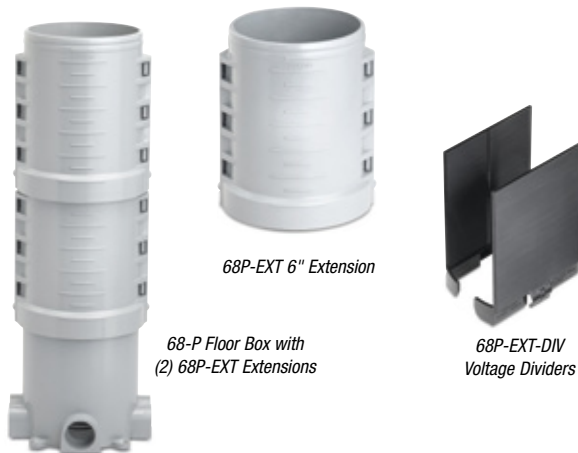
- Voltage divider has easy-cut score lines to accommodate concrete depths of 3 to 6 inches
- Faceplate has removable data plates and can accommodate GFCI or standard duplex receptacles
- Kit comes equipped with 4 standard keystone-size openings in the data plates. Other styles available include openings sized for Ortronics, Avaya, Panduit and Hubbell
- MopTite® cover uses a “snap-lock” to close the lid. No screws to turn...just push down the lid and it snaps in place. The cover uses a factory-installed gasket and exceeds all UL scrubwater exclusion requirements for carpet, wood and tile floors
- MopTite® cover available in solid brass or aluminum
- Includes everything required for a standard installation (68P floor box, data jacks and receptacles not included)



CAT. NO.	DESCRIPTION	STD. CTN.
68P-DV-KIT-BRS	Dual-Voltage Divider Kit with MopTite® Brass Cover	1
68P-DV-KIT-AL	Dual-Voltage Divider Kit with MopTite Aluminum Cover	1
68P-DV-DP-ORT	Ortronics Data Plate to Accommodate 2 Jacks	10
68P-DV-DP-AVA	Avaya Data Plate to Accommodate 4 Jacks	10
68P-DV-DP-PAN	PANDUIT Data Plate to Accommodate 2 Jacks	10
68P-DV-DP	Standard Data Plate to Accommodate 4 Keystone Jacks	10
68P-EXT	6" Extension for 68P Floor Box *	4
68P-EXT-DIV	Voltage Dividers for 68P-EXT *	4

*Keystone data plates come standard with the kit. Other style data plates are available from T&B and can be ordered separately.

6-Inch Extension for 68-P Floor Box



CAT. NO.	DESCRIPTION	STD. CTN.
68P-EXT	6" Extension for 68-P Floor Box *	4
68P-EXT-DIV	Voltage Dividers for 68P-EXT *	4
68-P	Round PVC Floor Box for Concrete Applications	8

* For use with Steel City® round PVC floor box only, catalog number 68-P.