

Cable Ties

Catalogue Number Construction

L **4** **18** **HS** - **9** **M**

Product Prefix
P - Plain Bagged Cable Ties
L - Cable Ties

Length
18 lb.
30 lb.
40 lb.
50 lb.
120 lb.
175 lb.
250 lb.

Tensile Strength

Type of Product
 Nylon 66 - Leave Blank
 Heat Stabilized - HS
 (Black and Natural Colour Only)
 Fluorescent - FL
 Mounting Head - MH
 Pushmount - PM
 Pushmount Releasable - PMR
 Releasable - R
 Restricted Bundle - TB
 Identification - ID

Colour
See Colour Table

Quantity
Q - 25 pack
L - 50 pack
C - 100 pack
D - 500 pack
M - 1,000 pack

MP **NY** - **750** - **9** **C**

Material
Nylon
TZ - Fluoropolymer
PV - PVC
PE - Polyethylene
FR - Flame Retardant
TL - Teflon

Size / #
.75"

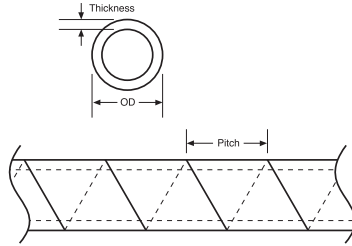
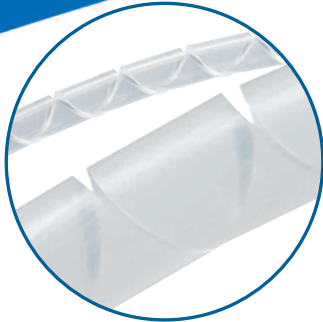
Colour
See Colour Table

Quantity
Q - 25 pack
L - 50 pack
C - 100 pack
D - 500 pack
M - 1,000 pack

- Product Prefix**
- MP** - Mounting Pad
 - ID** - Identification
 - S#** - Strapping Thickness
 - MC** - Mounting Cradle
 - PM** - Push Mounts
 - SM** - Screw Mounts
 - N#** - Plain-Edged Cable Clamps / Width
 - W#** - Self-Aligning Cable Clamps / Dia.
 - UL** - Adjustable Cable Clamps
 - GG** - Gator Grip
 - FA** - Flat Adhesive Clip
 - FS** - Flat Screw Clip
 - FR** - Flat Rubber Adhesive Clip
 - MS** - Snap Mount
 - RA** - Round Adhesive Clip
 - SR** - Spiral Wrap
 - GS** - Grommeting
 - GR** - Extruded Grommeting
 - GRU** - Extruded Grommeting Uncut

| Colour Table | |
|----------------------------------|-------------------------|
| 0 - Black (Weather-Resistant) | 7 - Purple |
| 1 - Brown | 8 - Grey |
| 2 - Red | 9 - Natural |
| 3 - Orange | 11 - Fluorescent Pink |
| 4 - Yellow | 16 - Fluorescent Orange |
| 5 - Green | 17 - Fluorescent Yellow |
| 6 - Blue | 18 - Fluorescent Green |
| | 20 - Fluorescent Blue |

Wire Protection Products



Spiral Wrap

Perfect for protection of bundles from 0.063 in. to 7 in. diameters

- Install with gaps for greater flexibility or butted together for maximum abrasion resistance, insulation, and rigidity
- Available in three materials
- Also known as right-hand cut or clockwise cut
- Use cutting tool SR-100 (see page C69)

| Cat. No. | Material | Outside Diameter | | Pitch | | Nominal Wall Thickness | | Minimum/Maximum Bundle Range | | | | UL Flammability | Reel Qty. | | |
|--------------------------------|------------------------------------|------------------|-------|-------|-------|------------------------|------|------------------------------|-------|-------|--------|-----------------|-------------|--|--|
| | | (in.) | (mm) | (in.) | (mm) | (in.) | (mm) | (in.) | (mm) | (in.) | (mm) | | | | |
| Forward Cut Spiral Wrap | | | | | | | | | | | | | | | |
| SRPE-125F-9-C | Natural Polyethylene | 0.19 | 4.75 | 0.24 | 6.10 | 0.04 | 1.02 | 0.06 | 1.60 | 0.50 | 12.70 | 94 HB | 1 (100 ft.) | | |
| SRPE-187F-9-C | | 0.19 | 4.75 | 0.24 | 6.10 | 0.04 | 1.02 | 0.13 | 3.18 | 1.50 | 38.10 | | | | |
| SRPE-250F-9-C | | 0.25 | 6.35 | 0.38 | 9.53 | 0.05 | 1.14 | 0.19 | 4.78 | 2.00 | 50.80 | | | | |
| SRPE-375F-9-C | | 0.38 | 9.53 | 0.44 | 11.13 | 0.05 | 1.32 | 0.31 | 7.95 | 3.00 | 76.20 | | | | |
| SRPE-500F-9-C | | 0.50 | 12.70 | 0.56 | 14.30 | 0.06 | 1.57 | 0.38 | 9.53 | 4.00 | 101.60 | | | | |
| SRPE-625F-9-C | | 0.63 | 15.88 | 0.63 | 15.88 | 0.06 | 1.57 | 0.63 | 15.88 | 4.50 | 114.30 | | | | |
| SRPE-750F-9-C | | 0.75 | 19.05 | 0.75 | 19.05 | 0.07 | 1.65 | 0.75 | 19.05 | 5.00 | 127.00 | | | | |
| SRPE-1000F-9-C | | 1.00 | 25.40 | 1.11 | 28.19 | 0.07 | 1.78 | 1.00 | 25.40 | 7.00 | 177.80 | | | | |
| SRPE-125F-0-C | Weatherable Black Polyethylene | 0.19 | 4.75 | 0.24 | 6.10 | 0.04 | 1.02 | 0.06 | 1.60 | 0.50 | 12.70 | | | | |
| SRPE-187F-0-C | | 0.19 | 4.75 | 0.24 | 6.10 | 0.04 | 1.02 | 0.13 | 3.18 | 1.50 | 38.10 | | | | |
| SRPE-250F-0-C | | 0.25 | 6.35 | 0.38 | 9.53 | 0.05 | 1.14 | 0.19 | 4.78 | 2.00 | 50.80 | | | | |
| SRPE-375F-0-C | | 0.38 | 9.53 | 0.44 | 11.13 | 0.05 | 1.32 | 0.31 | 7.95 | 3.00 | 76.20 | | | | |
| SRPE-500F-0-C | | 0.50 | 12.70 | 0.56 | 14.30 | 0.06 | 1.57 | 0.38 | 9.53 | 4.00 | 101.60 | | | | |
| SRPE-625F-0-C | | 0.63 | 15.88 | 0.63 | 15.88 | 0.06 | 1.57 | 0.63 | 15.88 | 4.50 | 114.30 | | | | |
| SRPE-750F-0-C | | 0.63 | 15.88 | 0.75 | 19.05 | 0.07 | 1.65 | 0.75 | 19.05 | 5.00 | 127.00 | | | | |
| SRPE-1000F-0-C | | 1.00 | 25.40 | 1.11 | 28.19 | 0.07 | 1.78 | 1.00 | 25.40 | 7.00 | 177.80 | | | | |
| SRFR-125F-WH-C | White Flame-Retardant Polyethylene | 0.19 | 4.75 | 0.24 | 6.10 | 0.04 | 1.02 | 0.13 | 3.18 | 1.50 | 38.10 | 94 HB | | | |
| SRFR-187F-WH-C | | 0.19 | 4.75 | 0.24 | 6.10 | 0.04 | 1.02 | 0.19 | 4.78 | 2.00 | 50.80 | | | | |
| SRFR-250F-WH-C | | 0.25 | 6.35 | 0.38 | 9.53 | 0.05 | 1.14 | 0.31 | 7.95 | 3.00 | 76.20 | | | | |
| SRFR-375F-WH-C | | 0.38 | 9.53 | 0.44 | 11.13 | 0.05 | 1.32 | 0.38 | 9.53 | 4.00 | 101.60 | | | | |
| SRFR-500F-WH-C | | 0.50 | 12.70 | 0.56 | 14.30 | 0.06 | 1.57 | 0.19 | 2.00 | 2.00 | 50.80 | | | | |
| SRTL-250F-9-C | Fluoropolymer | 0.25 | 6.35 | 0.38 | 9.53 | 0.05 | 1.32 | 0.31 | 3.00 | 3.00 | 76.20 | | | | |
| SRTL-500F-9-C | | 0.50 | 12.70 | 0.56 | 14.30 | 0.06 | 1.57 | 0.38 | 4.00 | 4.00 | 101.60 | | | | |

Sold in 100-ft. rolls.

Polyethylene

Available in natural and weatherable black.

For general indoor use to 122°F (50°C). Material is flexible and easy to work with.

Weatherable Polyethylene

Available in black only. Designed to resist ultraviolet light in outdoor applications.

Flame-Retardant Polyethylene

Available in white only.

Material is UL 94 V-0 rated. More economical and less rigid than nylon.

Nylon 6.6

Available in natural only.

Offers highest abrasion resistance and rigidity. Self-extinguishing to UL 94 HB and a UL Recognized Component.

Fluoropolymer

Available in opaque colour.

Excellent resistance to harsh environments 338°F (170°C) max operating temperature.