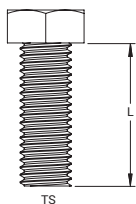
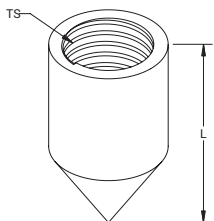
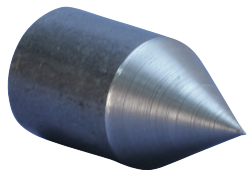


**GROUND ROD DRIVING STUD FOR SECTIONAL GROUND RODS****FEATURED HIGHLIGHTS**

- Used in conjunction with threaded couplers while driving sectional ground rods

Material: Steel

Part Number	Ground Rod Diameter, Nominal	Thread Size	Length
158100	5/8"	5/8 UNC	1.25"
158110	3/4"	3/4 UNC	1.50"
710090	3/8"	M10	0.71"
710100	3/8"	M10	0.83"
DS1	1"	1 UNC	2.50"
DS12	1/2"	1/2 UNC	1.50"
DS12S	1/2"	9/16 UNC	1.75"
DS34	3/4"	3/4 UNC	2.00"
DS58	5/8"	5/8 UNC	1.75"
DS58C	5/8"	5/8 UNC	1.44"

**GROUND ROD DRIVING POINT FOR SECTIONAL GROUND RODS****FEATURED HIGHLIGHTS**

- Threaded ground rod driving tip to assist in driving sectional ground rods into the earth

Material: Steel

Part Number	Ground Rod Diameter, Nominal	Thread Size	Length
SDT34	3/4"	3/4 UNC	1.7"
SDT58	5/8"	5/8 UNC	1.7"